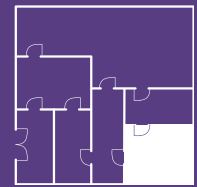


ESD



ESD

Wearwell offers both conductive and static-dissipative mats designed to eliminate static shock. These quality products promote improved team performance.

Your field needs ESD defense if

- Products being handled or produced in it are sensitive to static shock
- The air in the workspace has high levels of combustible fumes or particulates
- Your team is at risk for static shock

# ESD 101

Electrical resistance is measured in ohms; the smaller the rating, the more conductive the material.

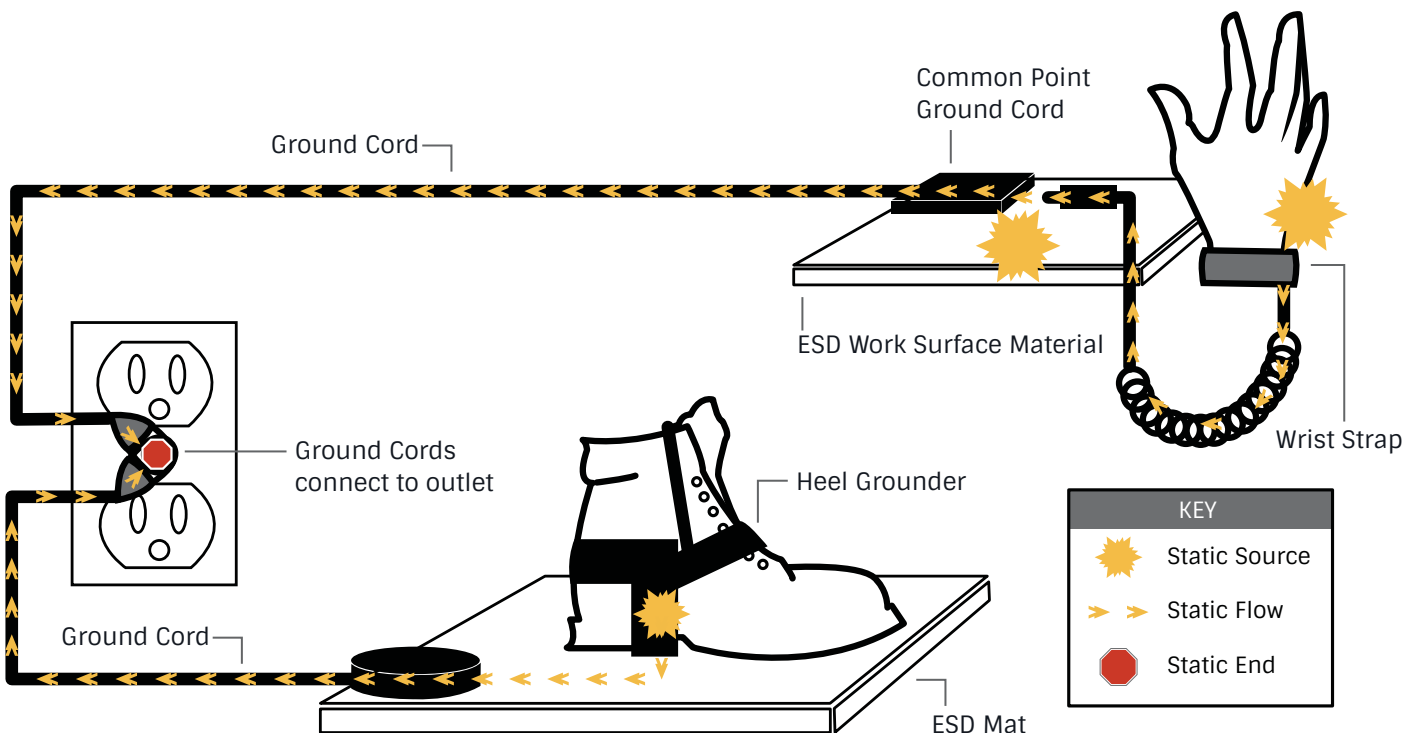
Think of static resistance as water running through a pipe. With nothing blocking the pipe, the water is free to flow very quickly. If the pipe is blocked by debris, the water can't flow as fast because it meets resistance.

**Conductive**  
( $1 \times 10^3 \Omega$  to  $1 \times 10^6 \Omega$ )

**Static Dissipative**  
( $>1 \times 10^6 \Omega$  to  $1 \times 10^{10} \Omega$ )

Low resistance/ohm rating

High resistance/ohm rating



# 557

## ErgoDeck® ESD



When static electricity builds up, it seeks a path to ground — often through the human body or through sensitive, conductive equipment. The best way to eliminate these risks is to create a static-dissipative environment. ErgoDeck® ESD — a comprehensive flooring solution — offers the best defense.

Used over conductive subflooring, ErgoDeck® ESD is your best defense against both worker fatigue and static shock that could compromise the quality of your products. Made of a proprietary TPO/carbon blend, ESD properties permeate the entire tile. No snaps or additional grounding is necessary when used over conductive flooring. Positive interlocks stay secure, ensuring areas of any size are protected. When installed wall-to-wall, ramps and corners aren't necessary. For transition areas, use ErgoDeck's standard universal ramps.

PATENT US 8,006,443B2 US D5210,650S

ITEM NUMBER	SIZE	THICKNESS	COLOR
557.78x18x18BK-CS10	18" x 18"	7/8"	BK



### SPECIFICATIONS

Compound: TPO

Edges: Optional 6"-Wide Safety Ramps

Warranty: 3 Years

EOS/ESD S7.1: 5x10<sup>^</sup>5 - 5x10<sup>^</sup>6

See page 19 for the universal ErgoDeck® ramps and corners.

# 785

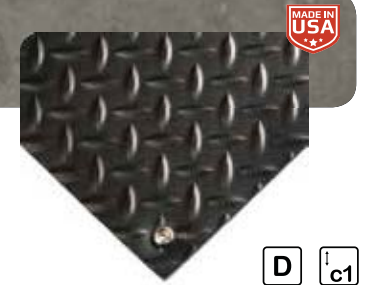
## Electrically Conductive Runner



Use Electrically Conductive Runner to prevent static and protect sensitive electronic equipment. It can be rolled out for long aisles or cut to size for specific workstations. A grounding snap is included on each mat for optimum mat performance. Available in Smooth or Diamond-Plate surfaces. **MAT MUST BE GROUNDED WITH A GROUND CORD; WORKERS MUST WEAR HEEL GRINDER OR CONDUCTIVE SHOES.**

ITEM NUMBER	SIZE	THICKNESS	COLOR	SURFACE TEXTURE
785.332x3x75	3' x 75'	3/32"	BK	SM, DP

Please specify Smooth or Diamond-Plate when ordering.



### SPECIFICATIONS

Compound: PVC

Edges: Square

Warranty: 1 Year

EOS/ESD S7.1: 3x10<sup>^</sup>4 - 5x10<sup>^</sup>5

# 786

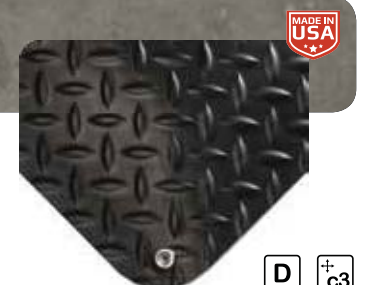
## Electrically Conductive Anti-Fatigue



Electrically Conductive Anti-Fatigue protects sensitive electronic equipment while dramatically reducing workers' standing fatigue. Our No. 1 seller for static-control applications, it features our durable, top-of-the-line Nitricell® sponge, providing the best long-term value for ESD applications. Available in Smooth or Diamond-Plate surfaces. **MAT MUST BE GROUNDED WITH A GROUND CORD; WORKERS MUST WEAR HEEL GRINDER OR CONDUCTIVE SHOES.**

ITEM NUMBER	SIZE	THICKNESS	COLOR	SURFACE TEXTURE
786.1516x2x3	2' x 3'	15/16"	BK	SM, DP
786.1516x3x5	3' x 5'	15/16"	BK	SM, DP
786.1516x3x75	3' x 75'	15/16"	BK	SM, DP
786.916x2x3	2' x 3'	9/16"	BK	SM, DP
786.916x3x5	3' x 5'	9/16"	BK	SM, DP
786.916x3x75	3' x 75'	9/16"	BK	SM, DP

Please specify Smooth or Diamond-Plate when ordering.



### SPECIFICATIONS

Compound: PVC/Nitrile-Infused Sponge

Edges: Lay-Flat Bevel

Warranty: 4 Years

EOS/ESD S7.1: 3x10<sup>^</sup>4 - 5x10<sup>^</sup>5



# 788

## Modular Diamond-Plate ESD



Modular Diamond-Plate ESD mats have been designed for areas where static discharge is a major concern. These solid 3' x 3' mats can either be used individually or joined together — quickly and with no connectors — to cover larger work areas.



MAT MUST BE GROUNDED WITH A GROUND CORD; WORKERS MUST WEAR HEEL GRINDER OR CONDUCTIVE SHOES.



ITEM NUMBER	SIZE	THICKNESS	COLOR	COMPOUND
788.12x3x3GRBK	3' x 3'	1/2"	BK	GR

### SPECIFICATIONS

Compound: GR: Natural Rubber

Edges: Safety Rounded

Warranty: 1 Year

EOS/ESD S7.1:3x10^4to5x10^5



# 789

## Modular WorkSafe® Light ESD



Modular WorkSafe® Light ESD is an ideal matting solution for areas where static discharge is a major concern and where light moisture might also come into play. Modular in nature, these open-design 3' x 3' mats are versatile enough that they can either be used individually or interlocked to cover larger work areas.



MAT MUST BE GROUNDED WITH A GROUND CORD; WORKERS MUST WEAR HEEL GRINDER OR CONDUCTIVE SHOES.



ITEM NUMBER	SIZE	THICKNESS	COLOR	COMPOUND
789.12x3x3GRBK	3' x 3'	1/2"	BK	GR

### SPECIFICATIONS

Compound: GR: Natural Rubber

Edges: Safety Rounded

Warranty: 1 Year



Static produced from walking can range from

# 10,000–12,000 VOLTS.

Static shock isn't felt until it's greater than

# 2,000 VOLTS.

# DAMAGE

can be done without knowing an event has occurred.



# 791 Static Dissipative Anti-Fatigue



Static Dissipative Anti-Fatigue is an ergonomic standing solution for manufacturing, pharmaceutical, and commercial areas where static electricity poses a problem. The carbon-impregnated polyester scrim embedded in the surface material ensures speedy static dissipation. Comes with a four-year warranty.  
**MAT MUST BE GROUNDED WITH A GROUND CORD; WORKERS MUST WEAR HEEL GRINDER OR CONDUCTIVE SHOES.**

ITEM NUMBER	SIZE	THICKNESS	COLOR
791.12x2x3GY	2' x 3'	1/2"	GY
791.12x3x5GY	3' x 5'	1/2"	GY
791.12x3x75GY	3' x 75'	1/2"	GY
791.12x4x75GY	4' x 75'	1/2"	GY



### SPECIFICATIONS

**Compound:** PVC/Nitrile-Infused Sponge  
**Edges:** Lay-Flat Bevel  
**Warranty:** 4 Years  
**EOS/ESD S7.1:** 3x10^7 to 5x10^8



# 793 Heel Grinder



ESD Heel Grinder allows static electricity to pass from workers who equip it to ESD matting or flooring underfoot. A required accessory for ESD matting, Heel Grinder is "one size fits all" with a Velcro loop for easy attachment.  
**FOR USE WITH ESD AND CONDUCTIVE MATTING.**

ITEM NUMBER	SIZE	COLOR
793.HG	One size fits all	BK



### SPECIFICATIONS

One Size Fits All



# 793 Ground Cord



The 15'-long ESD Ground Cord is used to connect ESD tabletop and floor mats to ground. The molded-in fastener has an integral one-mega-ohm resistor, conforms to 10mm snaps, and features a solderless terminal. Can be used with all conductive mats.  
**FOR USE WITH ESD AND CONDUCTIVE MATTING.**

ITEM NUMBER	SIZE	COLOR
793.15Cord	15'	BK



### SPECIFICATIONS



# 793

## ESD Work Surface Material



ESD Work Surface Material is designed for work surfaces where static control is imperative. Featuring a flexible three-layer construction, it is ideal for use under computers, as a liner for conductive bins, or for tabletops where components are packaged.

MAT MUST BE GROUNDED WITH A GROUND CORD.

ITEM NUMBER	SIZE	THICKNESS	COLOR
793.18x2x3SB	2' x 3'	1/8"	SB
793.18x2x4SB	2' x 4'	1/8"	SB

### SPECIFICATIONS

Compound: Vinyl

Edges: Square Cut

Warranty: 1 Year

EOS/ESD S7.1:1x10^7to5x10^8



# 793

## Wrist Strap



ESD Wrist Strap is a six-foot comfort strap that loops around a worker's wrist and grounds them to their ESD tabletop mat, allowing static electricity to dissipate harmlessly. ESD Wrist Strap features a solderless terminal.

ITEM NUMBER	SIZE	COLOR
793.6WSTRAP	6'	BK

### SPECIFICATIONS

Warranty: 1 Year



# 797

## ESD Common Point Ground Cord



ESD Common Point Ground Cord connects to and grounds two ESD Wrist Straps. ESD Common Point Ground Cord's molded-in male fastener connects to the snap on the tabletop mat while the terminal connects to a building ground.

ITEM NUMBER	SIZE	COLOR
797.CPCORD	15'	BK

### SPECIFICATIONS

Warranty: 1 Year

