



Fixed Spread Beams

- Manufactured to exceed all ASME B30.20 and OSHA regulations.
- Painted safety yellow for increased visibility.
- **ALL** Spreader Beams shipped with proof load certification paperwork
- Durable construction ideally suited to jobsite or warehouse use.
- Standard with swivel latch hooks.
- Made in U.S.A.
- Top rigging available - call for details.
- Custom lettering available - call for details.
- Custom designs available - call for engineering.
- **ALL** lifting equipment individually proof loaded per OSHA requirements.
- Minimum horizontal top rigging angle of 45°.
- Ideally suited for adding stability to critical lifts.

Working Load Limit in Pounds*	Model Number Headroom (in) Weight (lbs)	Outside Spread (L) in Feet*							A (in) C (in) E (in)
		4	6	8	10	12	16	20	
4,000	Part Number	13094	13097	13100	13103	13106	13109	13112	1.00
	HR =	7.37	7.37	8.12	8.12	8.12	8.12	8.12	0.50
	LBS =	30	50	90	110	130	172	215	.089
10,000	Part Number	13116	13119	13122	13125	13128	13131	13134	1.31
	HR =	8.23	8.98	8.98	8.98	9.98	9.98	9.98	0.75
	LBS =	36	87	112	140	190	250	306	1.08
20,000	Part Number	13138	13141	13144	13147	13150	13153	13156	1.66
	HR =	9.25	11.00	11.00	11.00	11.00	12.00	12.00	1.00
	LBS =	55	115	140	170	195	380	470	1.31

SPREADER BEAMS

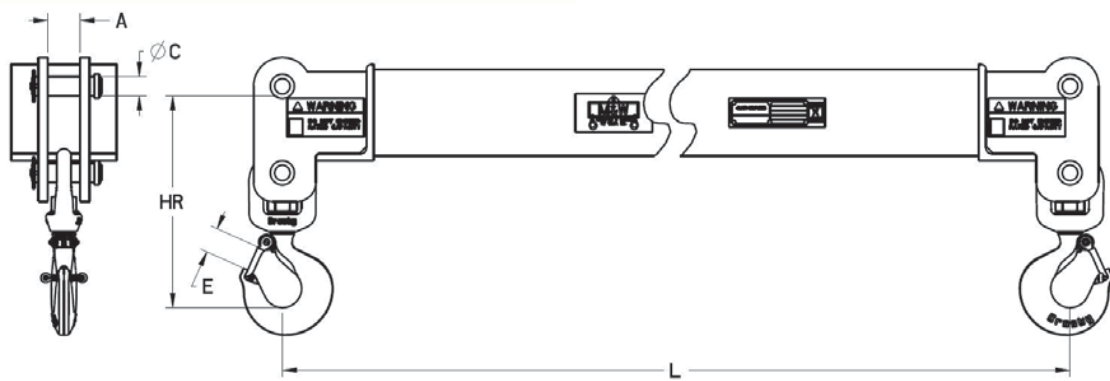


* Minimum horizontal top rigging angle is 45° on all fixed and adjustable spreaders. M&W recommends a minimum horizontal top rigging angle of 60°.

RFID TRACKING



CHIP EQUIPPED





Adjustable Spread Telescoping Beams

- Manufactured to exceed all ASME B30.20 and OSHA regulations.
- Painted safety yellow for increased visibility.
- **ALL** Spreader Beams shipped with proof load certification paperwork
- Durable construction ideally suited to jobsite or warehouse use.
- Standard with swivel latch hooks.
- Made in U.S.A.
- Top rigging available - call for details.
- Custom lettering available - call for details.
- Custom designs available - call for engineering.
- **ALL** lifting equipment individually proof loaded per OSHA requirements.
- Minimum horizontal top rigging angle of 45°.
- Ideally suited for adding stability to critical lifts.

Working Load Limit in Pounds*	Model Number Headroom (in) Weight (lbs)	Outside Spread (L) in Feet*				A (in) C (in) E (in)
		4 - 6	6 - 10	8 - 14	12 - 20	
4,000	Part Number	12805	12822	12813	12829	1.00
	HR =	5.37	5.12	5.12	5.12	0.50
	LBS =	50	85	155	235	0.89
10,000	Part Number	12834	12842	12848	12853	1.25
	HR =	6.53	6.28	6.28	6.28	0.75
	LBS =	60	140	180	365	1.08
20,000	Part Number	12864	12872	12880	12885	1.66
	HR =	7.63	7.63	7.63	7.63	1.00
	LBS =	85	180	230	505	1.31

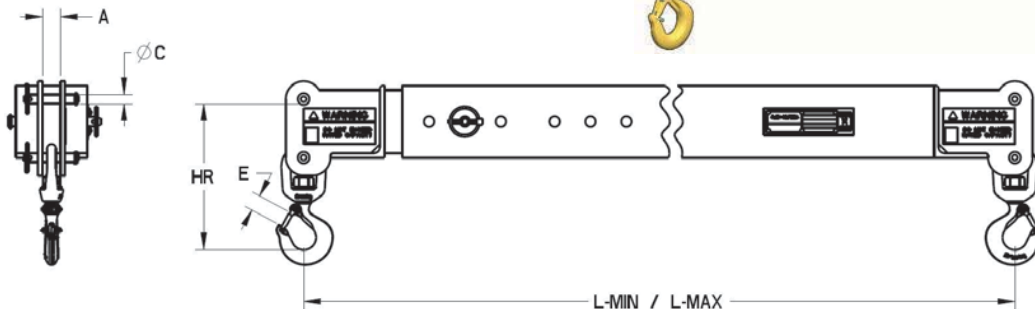
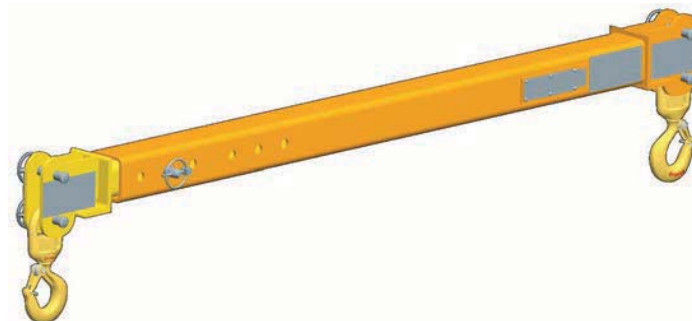
*Minimum horizontal top rigging angle is 45° on all fixed and adjustable spreaders. M&W recommends a minimum horizontal top rigging angle of 60°. Adjustable on 1" increments.

SPREADER BEAMS

RFID TRACKING



CHIP EQUIPPED



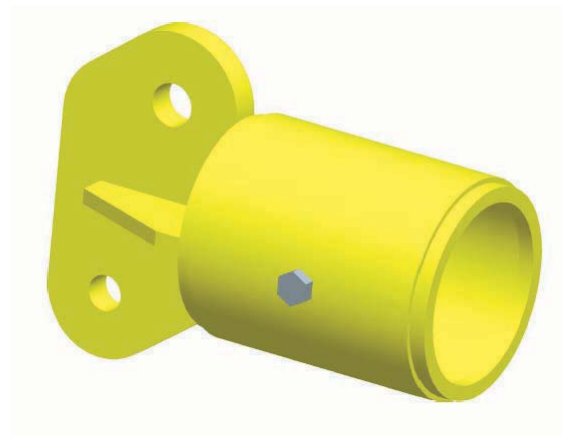


Custom Spreader Beam End Cap Kits

- Manufactured to exceed all ASME B30.20 and OSHA regulations when assembled to specifications using A53 Grade B Schedule 40 pipe.
- Painted safety yellow for increased visibility.
- **ALL** End Caps shipped with proof load certification paperwork.
- Durable construction ideally suited to jobsite or warehouse use.
- Made in U.S.A.
- Top rigging available - call for details.
- Custom lettering available - call for details.
- Custom designs available - call for engineering.
- **ALL** lifting equipment individually proof loaded per OSHA requirements.
- Minimum horizontal top rigging angle of 45° - M&W recommends a minimum angle of 60°.

End Cap Model	Outside Spread in Feet*								
	4	5	6	8	10	12	14	15	16
19499	19499-48	19499-60	19499-72	19499-96	19499-120	19499-144	19499-168	19499-180	
WLL (Tons)	7.5	7	6.5	5.5	4	2.9	2	1.5	
19500	19500-48	19500-60	19500-72	19500-96	19500-120	19500-144	19500-168	19500-180	19500-192
WLL (Tons)	17	17	17	17	17	16	15	14	13
19120	19120-48	19120-60	19120-72	19120-96	19120-120	19120-144	19120-168	19120-180	19120-192
WLL (Tons)	39	39	39	39	39	38	36	36	35

* Minimum horizontal top rigging angle is 45° on all fixed and adjustable spreaders. M&W recommends a minimum horizontal top rigging angle of 60°.



Technical Information

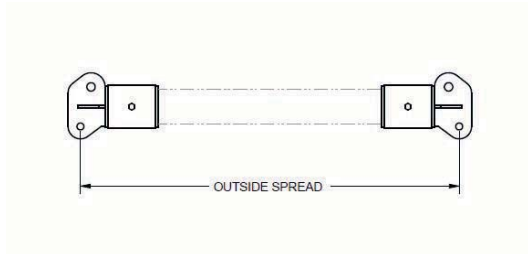
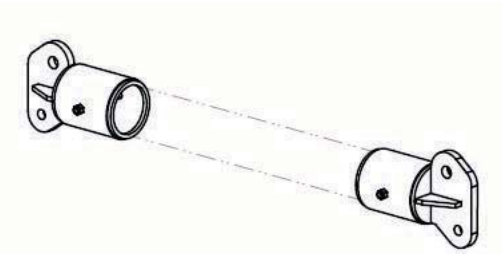
End cap kits are designed for use with A53 Grade B, Schedule 40 pipe between the end fittings and must have no weld joint irregularities. This steel pipe is widely available, and also available from M&W. The model 19499 uses a 2-1/2" nominal size pipe, the 19500 uses a 5" nominal size pipe and the 19120 uses an 8" nominal size pipe.

Lengths of pipe between end cap kits must be straight to within +/- 1/8" from each end, and ends of pipe should be cut squarely and cleanly from the centerline of the pipe. Lengths of pipe should be free from any factory defects, irregularities, or damage.

Each end of the length of pipe must have the correct diameter holes drilled through both ends and in proper alignment through both walls of the pipe. The model 19499 uses a Grade 8 hex head cap screw 5/8"-11 with a length of 4-1/2". The model 19500 uses a Grade 8 hex head cap screw 5/8"-11 with a length of 8". The model 19120 uses a Grade 8 hex head cap screw 1"-8 with a length of 11-1/2".



Custom Spreader Beam End Cap Kits



Outside Spread in Feet*									
18	20	22	24	26	28	30	32	34	36
19500-216 12	19500-240 10	19500-264 8	19500-288 7	19500-312 6	19500-336 5	19500-360 4.5			
19120-216 33	19120-240 31	19120-264 29	19120-288 27	19120-312 25	19120-336 23	19120-360 21	19120-384 19	19120-408 16	19120-432 15

End Cap Model	Top Shackle Min	Top Shackle Max	Bottom Shackle Min	Bottom Shackle Max	Weight per Pair
19499	5/8"	1-3/8"	5/8"	1"	28
19500	7/8"	1-5/8"	7/8"	1-3/8"	50
19120	1"	1-3/4"	1"	1-1/2"	288

RFID TRACKING



CHIP EQUIPPED

SPREADER BEAMS

Ordering Information

End cap kits are sold in pairs for models 19499, 19500 and 19120. Each cap kit comes complete with retaining bolts, capacity tags, and individual proof load certifications. End cap kits are proof tested and serial numbered in pairs.

Complete spreader beams can be ordered from the chart above in standard lengths. For example, a 10' spreader beam with 39 tons Working Load Limit capacity would use the 19120 end cap kits and would be supplied assembled with the proper A53 Grade B, Schedule 40 pipe. The pipe would also be tagged and serial numbered. From the chart above, the user would order part number **19120-120**. Complete spreader beams are also shipped with individual proof load certification paperwork.