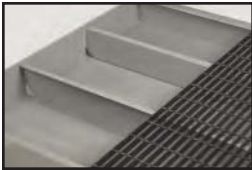




**4-Drum  
Forkliftable  
with Ramp**



**6-Drum Forkliftable**



All platforms feature full height internal support channels with flow-through vents.



**Model  
SSB-5125**



**Model  
SSP-5151**



## Spill-Control Platforms

Heavy gauge steel construction holds up in applications where plastic units just won't do, either for durability reasons, or when materials being stored are not compatible with plastic. Welded steel bar grating is removable for easy clean-up. Drip Channels "hook" units of same heights together, help prevent drainage between units. Optional Ramps available in 2 heights. All models help you comply with EPA and OSHA requirements; models with 66 and 99 gallon capacity help you comply with Uniform Fire Code.

### FORKLIFTABLE MODELS

4-way fork entry with 4" underclearance.

	SUMP CAP.	DIMENSIONS W x L x H	Model No.	Ship Wt.	Capacity Lbs. UDL
2-Drum	33 gal.	51 x 26 x 10.5	SST-5125	138	2000
2-Drum	66 gal.	51 x 26 x 16	SST-5125-66	171	2000
4-Drum	66 gal.	51 x 51 x 10.5	SST-5151	259	4000
6-Drum	99 gal.	76 x 51 x 10.5	SST-5176	381	6000
Ramp*	-	33 x 42 x 10.5	SST-RAMP	95	1500
Drip Channels	-	25-1/2" L	DCC	2	-

\*Ramp not for use with SST-5125-66

### LOW-PROFILE MODELS

Low platform height offers easy access to stored materials, easier loading and unloading of drums.

	SUMP CAP.	DIMENSIONS W x L x H	Model No.	Ship Wt.	Capacity Lbs. UDL
2-Drum	33 gal.	51 x 26 x 6.5	SSB-5125	125	3000
2-Drum	66 gal.	51 x 26 x 12	SSB-5125-66	158	3000
4-Drum	66 gal.	51 x 51 x 6.5	SSB-5151	233	6000
6-Drum	99 gal.	76 x 51 x 6.5	SSB-5176	358	9000
Ramp*	-	33 x 36 x 6.5	SSB-RAMP	70	1500
Drip Channels	-	25-1/2" L	DCC	2	-

\*Ramp not for use with SSB-5125-66

## Spill-Control Platform with Pallet Supports

An economical spill control platform that works with your palletized drums to store liquids while controlling leaks and spills. Deck is constructed from 12 gauge steel with flow through pallet supports to allow fluids to evenly distribute. Each unit is fully welded and powder coated.

	SUMP CAP.	DIMENSIONS W x L x H	Model No.	Ship Wt.	Capacity Lbs. UDL
4-Drum	66 gal.	51 x 51 x 6.5	SSP-5151	213	4000



## IBC Containment & Dispensing Station

Heavy gauge steel construction for durability and extended life. Large 400 gallon sump capacity with 10,000 lbs. load capacity. Steel grating deck panels are easily removable for cleaning. Includes drain plug and grounding screw. Helps you comply with EPA requirements.

### SINGLE IBC UNIT

Large deck surface has room for additional storage. Three-piece steel grating deck is 29" high. "Convertible" deck allows IBC to be positioned for internal dispensing within sump area. Included pail holder shelf attaches conveniently to inside or outside of sump.

Model No.	Overall Size	Capacity	Wt. (lbs.)
SST-IBC	51"W x 76"L x 29"H	400 gal	625

*Right: Positioned widthwise, Pail Shelf can be hung outside of sump, allowing extra storage space on deck.*



**Model  
SST-IBC**



**Model  
SST-IBC**

*Above: Positioned lengthwise with IBC moved back, there is sufficient room to hang Pail Shelf on inside of sump (one decking panel is removed).*

### DOUBLE IBC UNIT

Convenience of storing 2 IBC's side by side, and a lower profile for easier access. Four piece removable grating deck is 23" high. Includes 2 removable pail holder shelves.

Model No.	Overall Size	Capacity	Wt. (lbs.)
SST-IBC-2	51"W x 99"L x 23"H	400 gal	702



**Model  
SST-IBC-2**

## Spill Control Platform with Drum Rack

Heavy gauge steel construction in a drum storage system that position the drums ready for dispensing. 1- Drum unit has 33 gallon sump capacity and 2- Drum unit has 66 gallon sump capacity. Both include 4 way forkliftable access.

Drum Capacity	Dimensions W x L x H	Model No.	Wt.
1-Drum	26 x 51 x 22	SST-5125-1D	105
2-Drum	51 x 51 x 22	SST-5151-2D	170



**Model  
SST-5151-2D**



## 2-Drum Spill Control Cart

**3000 lbs. Capacity**

Durable welded steel construction – stronger than plastic and non-combustible. Sump has removable steel bar grating deck for easy clean-ups. Chemical resistant 6” polyurethane casters, 2 rigid and 2 swivel with wheel brakes to help prevent unwanted movement. Removable pipe handle with cross brace extends 25” above top of sump.

Deck W x L x H	Model No.	Capacity	Wt.
26 x 51 x 14	SSB-5125-6PYBK	33 gallon	170
26 x 51 x 19-1/2	SSB512566-6PYBK	66 gallon	203



## 4-Drum Spill Control Cart with Floor Lock

**3000 lbs. Capacity**

This mobile containment cart allows you to store and transport up to 4-55 gallon drums. The Floor Lock helps prevent unwanted movement once the cart is in position. All-welded steel construction with a 66 gallon sump capacity and removable bar grating for easy clean-ups. 2 swivel, 2 rigid 6” x 2” polyurethane casters. Removable pipe handle with cross braces is 36” wide.

Deck W x L x H	Model No.	Wt.
51 x 51 x 15-1/2	SSB-5151-6PYFL	301



## Rack Decking with Spill Control Sump

Designed to fit with your existing pallet racks, this spill control platform installs quickly and will contain liquids from dripping below. Top grating is 51” deep x 49” wide with two sump sizes to fit either 42” or 48” deep pallet racks. Both sizes have a 66 gallon sump capacity to help you comply with EPA regulations.

Deck W x L x H	Model No.	Description	Wt.
51 x 49 x 8-1/2	SS-RD-5149-42	Fits 42” deep pallet racks	254
51 x 49 x 7-1/2	SS-RD-5149-48	Fits 48” deep pallet racks	240