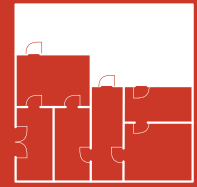


# Manufacturing



## PVC AND RUBBER

Like track-and-field Olympians, today's workers are being asked to perform in a range of environments. Give your industrial athletes a competitive advantage with the right surface.

PVC and rubber matting is the right call if

- The area is wet, dry, or slippery
- Chemical resistance and water resistance are important
- Goals include drainage and elevation above fluids and delivering safety and support to workers



# ERGODECK® KITS

Each ErgoDeck® Kit has everything you need to set up an ergonomic workstation in minutes. ErgoDeck® rivals most rubber mats for maintenance, chemical resistance, and performance. No other interlock can touch the secure LockSafe® system! Regardless of the conditions, ErgoDeck® delivers!



## 552 Integrated No-Slip Cleats Solid Kit



ErgoDeck® with Integrated No-Slip Cleats kits have all of the components necessary to create a non-slip workstation mat. No tools or cutting needed! Embedded in the tiles, No-Slip Cleats withstand pressure washing and other heavy cleaning. These ultra-rugged kits are perfect for individual workstations that reside in some of the toughest industrial environments.

ITEM NUMBER	SIZE	THICKNESS	COLOR
552.78x42x48BYL	42" x 48"	7/8"	BYL
552.78x42x66BYL	42" x 66"	7/8"	BYL
552.78x42x84BYL	42" x 84"	7/8"	BYL



### SPECIFICATIONS

**Compound:** PVC  
**Edges:** 6"-Wide YL Safety Ramps on 3 Sides  
**Warranty:** 3 Years

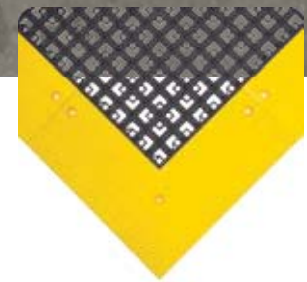


## 553 Integrated No-Slip Cleats Open Kit



ErgoDeck® with Integrated No-Slip Cleats Open Kit is an easy and effective counter to the most slippery, wet work conditions. Built-in cleats deliver wear-resistant traction while the open-hole design wicks away water from the work surface.

ITEM NUMBER	SIZE	THICKNESS	COLOR
553.78x42x48BYL	42" x 48"	7/8"	BYL
553.78x42x66BYL	42" x 66"	7/8"	BYL
553.78x42x84BYL	42" x 84"	7/8"	BYL



### SPECIFICATIONS

**Compound:** PVC  
**Edges:** 6"-Wide YL Safety Ramps on 3 Sides  
**Warranty:** 3 Years



# 556

## Comfort Kit



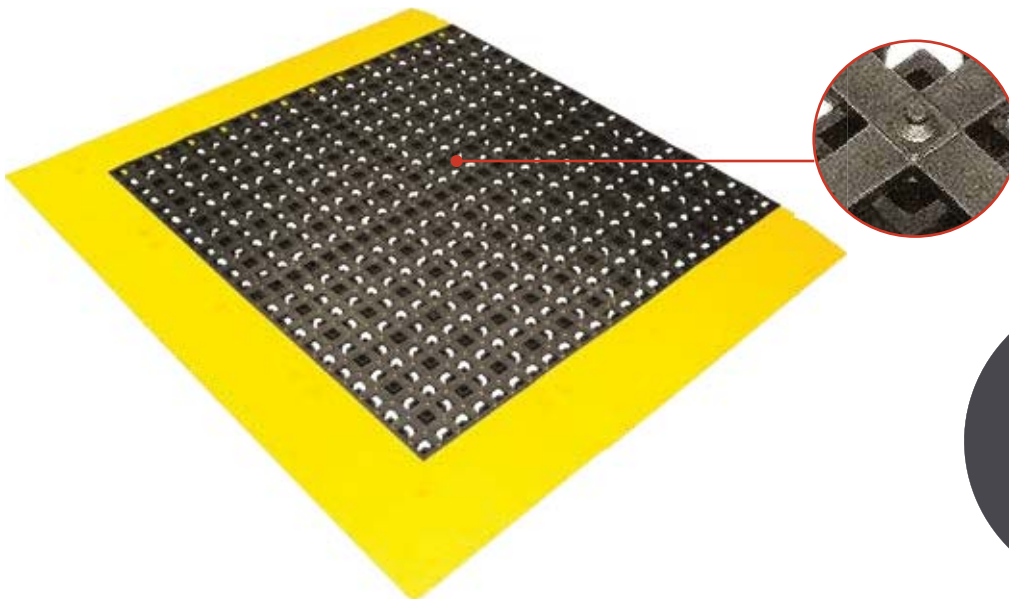
Comprising a pre-selected set of our exclusive ErgoDeck® Comfort tiles — 7/8"-thick PVC engineered to be as resilient as rubber — the ErgoDeck® Comfort Kit includes everything you need to create a safe, long-lasting, ergonomic workstation. No cutting, gluing, or tools are required for assembly thanks to our LockSafe Positive Interlocking System. Just snap the components together and you've got a high-performance standing solution versatile enough to cover wet or dry work areas.

ITEM NUMBER	SIZE	THICKNESS	COLOR
556.78x42x48CHYL	42" x 48"	7/8"	CHYL
556.78x42x66CHYL	42" x 66"	7/8"	CHYL
556.78x42x84CHYL	42" x 84"	7/8"	CHYL



### SPECIFICATIONS

**Compound:** PVC  
**Edges:** 6"-Wide YL Safety Ramps on 3 Sides  
**Warranty:** 3 Years



**NEED A LARGER SIZE?**  
Check out pages 19–20 for a highly customizable solution for any size area!



# F.I.T.™ KITS

Each F.I.T.™ Kit contains everything you need to create a complete workstation mat. Assemble the kit in minutes without any cutting or gluing — no tools required!

US REG. NO. 3,739,710



## 544/545

## F.I.T.™ Kit



A F.I.T.™ Kit is a remarkably simple and versatile matting solution for nearly any environment. Each kit contains everything you need to create an ergonomic workstation. No tools or cutting required! Snap it together in five minutes and use it for years.

ITEM NUMBER	SIZE	THICKNESS	COLOR
544.58x27x30BYL	27" x 30"	5/8"	BYL
544.58x27x42BYL	27" x 42"	5/8"	BYL
544.58x27x54BYL	27" x 54"	5/8"	BYL
544.58x27x66BYL	27" x 66"	5/8"	BYL
544.58x27x90BYL	27" x 90"	5/8"	BYL
544.58x39x66BYL	39" x 66"	5/8"	BYL
545.58x27x30BYL *	27" x 30"	5/8"	BYL
545.58x27x42BYL *	27" x 42"	5/8"	BYL
545.58x27x54BYL *	27" x 54"	5/8"	BYL
545.58x27x66BYL *	27" x 66"	5/8"	BYL
545.58x27x90BYL *	27" x 90"	5/8"	BYL
545.58x39x66BYL *	39" x 66"	5/8"	BYL

\* GRITSHIELD™ option

### SPECIFICATIONS

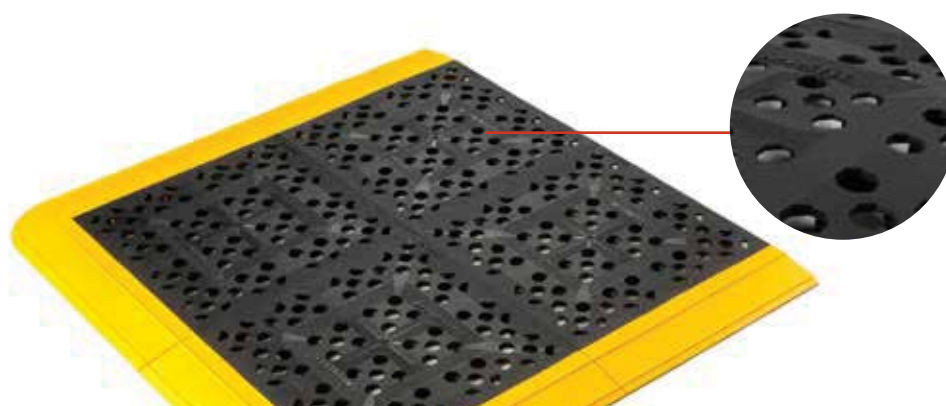
**Compound:** PVC

**Edges:** 3"-Wide Safety Ramps on 3 Sides

**Warranty:** 1 Year



w/GS



Angled surface design routes fluids through holes for quick drainage!

# 546

## F.I.T.™ Emergency Eyewash Kit



F.I.T.™ Emergency Eyewash Kit is a remarkably simple, compact, and versatile matting solution that enables you to designate an eyewash station properly. The kit's green tiles and yellow borders ensure high visibility for the station once assembled.

CONFORMS TO ANSI Z535.1-1998 STANDARD

ITEM NUMBER	SIZE	THICKNESS	COLOR
546.58x27x30GNYL	27" x 30"	5/8"	GNYL



### SPECIFICATIONS

**Compound:** PVC  
**Edges:** 3"-Wide Safety Ramps on 3 Sides  
**Warranty:** 1 Year



# 546

## F.I.T.™ Emergency Shower Kit



F.I.T.™ Emergency Shower Kit is a compact, simple way to make your workplace's emergency shower visible. The kit ships with red F.I.T.™ tiles and yellow borders that, once assembled, will clearly identify the station in case of an emergency.

CONFORMS TO ANSI Z535.1-1998 STANDARD

ITEM NUMBER	SIZE	THICKNESS	COLOR
546.58x27x30RDYL	27" x 30"	5/8"	RDYL
546.58x27x42RDYL	27" x 42"	5/8"	RDYL
546.58x27x42GNYL	27" x 42"	5/8"	GNYL



### SPECIFICATIONS

**Compound:** PVC  
**Edges:** 3"-Wide Safety Ramps on 3 Sides  
**Warranty:** 1 Year



# 24/SEVEN®

24/Seven® is Wearwell's family of high-performance, interconnecting rubber anti-fatigue mats available in three distinct rubber formulations: GR (Grease Resistant), for areas with water or dry debris; CFR (Cutting-Fluid Resistant), for areas with mineral oil-based fluids; and NBR (Nitrile Rubber), for maximum effectiveness in areas with petroleum-based fluids.



## 24/SEVEN®

24/Seven® is the family name for Wearwell's high performance, 3' x 3', interconnecting rubber anti-fatigue mats. These resilient modular mats are 5/8" thick and tough enough to handle 24/7 shift operations, while still being supple enough to provide cushioned support where it's needed.

Because of 24/Seven®'s modularity, mats in this family can be combined and positioned to cover large flooring areas quickly. Or use them for single workstations and assembly lines.

24/Seven® mats are available with a wide variety of options. Three different rubber compounds provide resistance against grease (GR), cutting fluid (CFR), and petroleum-based fluids (NBR). Choose from a solid mat design for drier areas or a perforated variation to maximize drainage in wet workspaces. GRITSHIELD™ can also be added to increase traction, if needed.



## 570CFR-576CFR

## Cutting-Fluid Resistant



24/Seven® Cutting-Fluid Resistant (CFR) is made of a specially formulated rubber engineered to resist mineral oil. It is also effective against silicone-based brake fluid, boric acid, and ethylene glycol. 24/Seven® mats made with the CFR compound are available in solid and drainage variations, as well as with GRITSHIELD™.

### SPECIFICATIONS

**Compound:** CFR:  
Cutting-Fluid Resistant

**Edges:** Optional 3"-Wide Male and Female Safety Ramps

**Warranty:** 1 Year



F: Female connector  
M: Male connector

ITEM NUMBER	SIZE	THICKNESS	COLOR	COMPOUND
570CFR 24/Seven® Solid Cutting-Fluid Resistant				
570.58x3x3CFRBK	3' x 3'	5/8"	BK	CFR
*574.58x3x3CFRBK	3' x 3'	5/8"	BK	CFR
572CFR 24/Seven® Open Cutting-Fluid Resistant				
572.58x3x3CFRBK	3' x 3'	5/8"	BK	CFR
*576.58x3x3CFRBK	3' x 3'	5/8"	BK	CFR
24/Seven® Cutting-Fluid Resistant Edging				
572.EdgingFCFRBK	3" x 39"	5/8"	BK, YL	CFR
572.EdgingMCFRBK	3" x 39"	5/8"	BK, YL	CFR

\* GRITSHIELD™ option



# 570GR/572GR

## Grease Resistant



24/Seven® Grease Resistant (GR) is made of high-quality molded rubber. Designed for areas with water and dry debris, it is also resistant to boric acid and ethylene glycol. 24/Seven® mats made with the GR compound are available in solid and drainage variations.

ITEM NUMBER	SIZE	THICKNESS	COLOR	COMPOUND
<b>570GR 24/Seven® Solid Grease Resistant</b>				
570.58x3x3GRBK	3' x 3'	5/8"	BK	GR
<b>572GR 24/Seven® Open Grease Resistant</b>				
572.58x3x3GRBK	3' x 3'	5/8"	BK	GR
<b>24/Seven® Grease Resistant Edging</b>				
572.EdgingFGRBK	3" x 39"	5/8"	BK, YL	GR
572.EdgingMGRBK	3" x 39"	5/8"	BK, YL	GR

### SPECIFICATIONS

**Compound:** GR: Grease Resistant

**Edges:** Optional 3"-Wide Male and Female Safety Ramps

**Warranty:** 1 Year



F: Female connector  
M: Male connector

# 570NBR-576NBR

## Nitrile Rubber



24/Seven® Nitrile Rubber's (NBR) compound is the most resistant in the 24/Seven® family. It stands up to all of the fluids resisted by the GR and CFR formulations, as well as animal fats, brake fluid, chlorine solution, diesel oil, petroleum-based hydraulic oil, salt water, and vegetable oil. 24/Seven® mats made with the NBR compound are available in solid and drainage variations, as well as with GRITSHIELD™.

ITEM NUMBER	SIZE	THICKNESS	COLOR	COMPOUND
<b>570NBR 24/Seven® Solid Nitrile Rubber</b>				
570.58x3x3NBRBK	3' x 3'	5/8"	BK	NBR
*574.58x3x3NBRBK	3' x 3'	5/8"	BK	NBR
<b>572NBR 24/Seven® Open Nitrile Rubber</b>				
572.58x3x3NBRBK	3' x 3'	5/8"	BK	NBR
*576.58x3x3NBRBK	3' x 3'	5/8"	BK	NBR
<b>24/Seven® Nitrile Rubber Edging</b>				
572.EdgingFNBRBK	3" x 39"	5/8"	BK, YL	NBR
572.EdgingMNBRBK	3" x 39"	5/8"	BK, YL	NBR

\* GRITSHIELD™ option

### SPECIFICATIONS

**Compound:** NBR: Nitrile Rubber

**Edges:** Optional 3"-Wide Male and Female Safety Ramps

**Warranty:** 1 Year



w/GS

F: Female connector  
M: Male connector



# 476

## Industrial WorkSafe®



Industrial WorkSafe® now comes equipped with more options to fit today's demanding workplaces and budgets. Lighter, 5/8" thick, and with upgraded rubber formulations, the reworked WorkSafe® features an array of price points and performance options.

ITEM NUMBER	SIZE	THICKNESS	COLOR	COMPOUND
476.58x2x3NBRBYL	2' x 3'	5/8"	BYL	NBR
476.58x3x4NBRBYL	3' x 4'	5/8"	BYL	NBR
476.58x3x5NBRBYL	3' x 5'	5/8"	BYL	NBR
476.58x3x9.8GRBK	3' x 9.8'	5/8"	BK, BOR	GR
476.58x3x9.8NBRBYL	3' x 9.8'	5/8"	BYL	NBR



### SPECIFICATIONS

**Compound:** GR: Natural Rubber or NBR: Nitrile Rubber  
**Edges:** Molded-in Safety Borders  
**Warranty:** 1 Year

# 477

## WorkSafe® Grease Resistant



WorkSafe® is a veteran All-Pro who remains unfazed. Thick and resilient, tough as all get-out, WorkSafe® is still versatile enough to fit most any workstation. Never underestimate this top seller — the gentle giant among rubber standing mats!

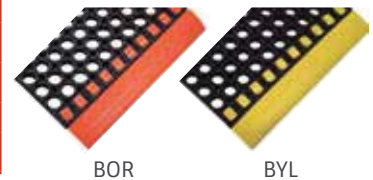
ITEM NUMBER	SIZE	THICKNESS	COLOR	COMPOUND
477.78x18x24GRBK	18" x 24"	7/8"	BK	GR
477.78x18x48GRBK	18" x 48"	7/8"	BK	GR
477.78x28x40	28" x 40"	7/8"	BOR, BYL	GR
477.78x2x3GRBK	2' x 3'	7/8"	BK	GR
477.78x3x30GRSBK	3" x 30"	7/8"	BK	GR
477.78x3x4GRBK	3' x 4'	7/8"	BK	GR
477.78x3x5GRSBK	3' x 5'	7/8"	BK	GR
477.78x40x124	40" x 124"	7/8"	BOR, BYL	GR
477.78x40x52	40" x 52"	7/8"	BOR, BYL	GR
477.78x40x64	40" x 64"	7/8"	BOR, BYL	GR
477.EdgingOR	2" x 65"	1/2"	OR	GR
477.EdgingRollIOR	2" x 65"	3/8"	OR	GR
477.EdgingRollIYL	2" x 65"	3/8"	YL	GR
477.EdgingYL	2" x 65"	3/8"	YL	GR
Connector.WSH.BK	—	—	—	BK

### SPECIFICATIONS

**Compound:** GR: Natural Rubber  
**Edges:** Optional Attached Safety Edging  
**Warranty:** 1 Year



Connector

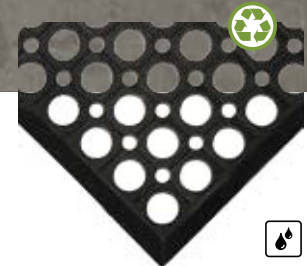


BOR

BYL

# 474

## WorkRite



WorkRite's lightweight 1/2"-thick design and molded-in beveled edges set the standard for all other rubber mats. It is economical, suitable for both non-caustic wet and dry areas, and simple to keep clean with its hygienic open design.

ITEM NUMBER	SIZE	THICKNESS	COLOR
474.12x3x10BK	3' x 10'	1/2"	BK
474.12x3x20BK	3' x 20'	1/2"	BK
474.12x3x5BK	3' x 5'	1/2"	BK



### SPECIFICATIONS

**Compound:** GR: Natural Rubber  
**Edges:** Molded-in Safety Bevel  
**Warranty:** 1 Year



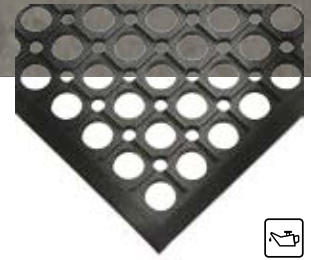
# 478

## WorkSafe® Light



WorkSafe® Light is an invaluable matting solution for cutting-fluid environments where sure footing, quick drainage, and fatigue reduction are essential. Popular for its versatility and dependability, WorkSafe® Light will never let you down. And always lifts you up!

ITEM NUMBER	SIZE	THICKNESS	COLOR
478.12x3x10GY	3' x 10'	1/2"	GY
478.12x3x20GY	3' x 20'	1/2"	GY
478.12x3x5GY	3' x 5'	1/2"	GY



### SPECIFICATIONS

**Compound:** CFR: Cutting-Fluid Resistant Rubber

**Edges:** Molded-in Safety Bevel

**Warranty:** 1 Year



# 222

## Sanitizing Footbath Mat



The Sanitizing Footbath Mat decontaminates shoes and boots, which can spread harmful germs and bacteria in food-production facilities. Fill the mat's 1/2"- or 2 1/2"-deep well with disinfectant solution and then step in to clean footwear.

ITEM NUMBER	SIZE	THICKNESS	COLOR
222.12x24x32BK	24" x 32"	1/2"	BK
222.2.5x32x39BK	32" x 39"	2 1/2"	BK
222.2.5x32x39BYL	32" x 39"	2 1/2"	BYL



### SPECIFICATIONS

**Compound:** GR: Natural Rubber

**Edges:** Molded Containment Walls

**Warranty:** 1 Year

# 482

## Grade "A"®



Grade "A"® mats combat fatigue while addressing issues specific to food-production environments. Lightweight with built-in handles, these mats are easy to maintain. The proprietary nitrile compound passes NSF test ASTM G21-96 (2002), has GRAS status, and is CFIA approved. PATENT US D609,050S

ITEM NUMBER	SIZE	THICKNESS	COLOR
482.12x30x36TC	30" x 36"	1/2"	TC
482.12x30x60TC	30" x 60"	1/2"	TC

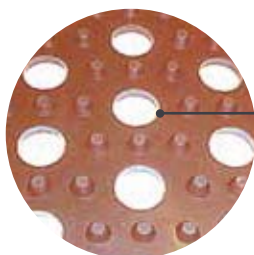


### SPECIFICATIONS

**Compound:** GP: Nitrile Rubber

**Edges:** Molded Safety Edges

**Warranty:** 2 years



Open underside allows fluids and particles to pass freely

# 454

## Ortho Stand™



Ortho Stand™ has a distinctive bubble surface design that provides great performance at an economical price point. Constructed of durable natural rubber, Ortho Stand™ is a solid contender in the battle against fatigue.

ITEM NUMBER	SIZE	THICKNESS	COLOR
454.12x2x3	2' x 3'	1/2"	BK, BYL
454.12x2x3BYL	2' x 3'	1/2"	BYL
454.12x3x4BK	3' x 4'	1/2"	BK

### SPECIFICATIONS

**Compound:** GR: Natural Rubber

**Edges:** Molded-in Safety Bevel

**Warranty:** 1 Year



# 472

## Modular WorkSafe® Light



These innovative 3' x 3' mats interlock with no additional attachments. At 1/2" thick, the mat features rounded outer edges that eliminate the need for beveled ramps and built-in connectors that allow you to easily assemble a larger ergonomic mat that works in wet, dry, or even greasy environments.

ITEM NUMBER	SIZE	THICKNESS	COLOR	COMPOUND
472.12x3x3GPBK	3' x 3'	1/2"	BK	GP
472.12x3x3GRBK	3' x 3'	1/2"	BK	GR

### SPECIFICATIONS

**Compound:** GP: Nitrile Rubber  
or GR: Natural Rubber

**Edges:** Safety Rounded

**Warranty:** 1 Year



GR

GP

# 470

## Modular Diamond-Plate



Modular Diamond-Plate brings a popular look to the world of rubber mats. Available in both Grease Resistant (GR) and Grease Proof (GP) 3' x 3' interlocking tiles, it is 1/2" thick — below the OSHA recommended 5/8" threshold for trip hazards — and has rounded edges.

ITEM NUMBER	SIZE	THICKNESS	COLOR
470.12x3x3GPBK	3' x 3'	1/2"	BK
470.12x3x3GRBK	3' x 3'	1/2"	BK

### SPECIFICATIONS

**Compound:** GP: Nitrile Rubber  
or GR: Natural Rubber

**Edges:** Safety Rounded

**Warranty:** 1 Year



GR

GP