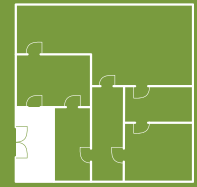


Entrance



ENTRANCE

When athletes cross the threshold onto the playing field, they leave the world behind to focus on the game at hand. The same should go for the workplace, where mental and material debris need to be checked at the door. Use entrance mats to keep extraneous dirt outside and your facility in match condition.

211

Elite Super Olefin



Elite Super Olefin is an economical but attractive carpet mat that is 3/8" thick. Olefin fibers are tough but soft to the touch. Elite Super Olefin gets the jobs of water absorption and dirt collection done.

ITEM NUMBER	SIZE	THICKNESS	COLOR
211.38x2x3	2' x 3'	3/8"	BK, BL, BN, CH, RD
211.38x3x4	3' x 4'	3/8"	BK, BL, BN, CH, RD
211.38x3x5	3' x 5'	3/8"	BK, BL, BN, CH, RD
211.38x3x60	3' x 60'	3/8"	BK, BL, BN, CH, RD
211.38x3x6	3' x 6'	3/8"	BK, BL, BN, CH, RD
211.38x4x60	4' x 60'	3/8"	BK, BL, BN, CH, RD
211.38x4x6	4' x 6'	3/8"	BK, BL, BN, CH, RD
211.38x4x8	4' x 8'	3/8"	BK, BL, BN, CH, RD
211.38x6x60	6' x 60'	3/8"	BK, BL, BN, CH, RD

SPECIFICATIONS

Compound: Olefin

Edges: 1" Vinyl Border

Warranty: 1 Year



Available in cuts up to 60'

287

Cavalier



Cavalier carpet mats feature coarse fibers arranged in a ribbed design that scrape dirt off the bottom of shoes. The fabric pattern also hides traces of foot traffic, making it a perfect interior entrance mat.

ITEM NUMBER	SIZE	THICKNESS	COLOR
287.516x3x4RB	3' x 4'	5/16"	BN, CH, GY, RD
287.516x3x5RB	3' x 5'	5/16"	BN, CH, GY, RD
287.516x3x60RB	3' x 60'	5/16"	BN, CH, GY, RD
287.516x3x6RB	3' x 6'	5/16"	BN, CH, GY, RD
287.516x4x60RB	4' x 60'	5/16"	BN, CH, GY, RD
287.516x4x8RB	4' x 8'	5/16"	BN, CH, GY, RD
287.516x6x60RB	6' x 60'	5/16"	BN, CH, GY, RD

SPECIFICATIONS

Compound: 100% Polypropylene

Edges: 1" Vinyl Border

Warranty: 1 Year



Available in cuts up to 60'

290

Clean Zone



With an overall thickness of 5/16", Clean Zone is the premier mat for absorption and dirt busting that provides great all-around value. The dense weave of polypropylene fibers make water, dirt, and traffic patterns all but disappear.

ITEM NUMBER	SIZE	THICKNESS	COLOR
290.516x2x3	2' x 3'	5/16"	BN, CH, GY, RD
290.516x3x4	3' x 4'	5/16"	BN, CH, GY, RD
290.516x3x5	3' x 5'	5/16"	BN, CH, GY, RD
290.516x3x60	3' x 60'	5/16"	BN, CH, GY, RD
290.516x4x60	4' x 60'	5/16"	BN, CH, GY, RD
290.516x4x6	4' x 6'	5/16"	BN, CH, GY, RD
290.516x4x8	4' x 8'	5/16"	BN, CH, GY, RD
290.516x6x60	6' x 60'	5/16"	BN, CH, GY, RD

SPECIFICATIONS

Compound: 100% Polypropylene

Edges: 1" Vinyl Border

Warranty: 1 Year



Available in cuts up to 60'

220

Multi-Guard Heavy Duty

Multi-Guard Heavy Duty entrance mats use thousands of rubber scrapers to remove dirt, mud, and other debris from shoes. Capable of capturing pounds of dirt between cleanings, Multi-Guard Heavy Duty defends your entryways from crud — period.

ITEM NUMBER	SIZE	THICKNESS	COLOR
220.12x24x32BK	24" x 32"	1/2"	BK
220.12x28x46BK	28" x 46"	1/2"	BK
220.12x32x39BK	32" x 39"	1/2"	BK
220.12x3x5BK	3' x 5'	1/2"	BK
220.12x3x6BK	3' x 6'	1/2"	BK



SPECIFICATIONS

Compound: GR: Natural Rubber

Edges: 1" Molded and Beveled

Warranty: 1 Year



224

UpFront Scraper

UpFront Scraper mats are the industry standard for economical entrance mats. Both the solid and drainage versions do a great job preventing dirt and moisture from entering buildings. UpFront Scraper gets the dirty work done.

ITEM NUMBER	SIZE	THICKNESS	COLOR	SURFACE TEXTURE
224.516x3x5GRBK	3' x 5'	5/16"	BK	UNS
224.516x3x5GRSLTBK	3' x 5'	5/16"	BK	SLT

Please specify Slotted or Unslotted when ordering.



SPECIFICATIONS

Compound: SBR: Natural Rubber

Edges: Tapered

Warranty: 1 Year



227

OutFront Reversible

A versatile scraper mat, OutFront Reversible provides an all-season line of defense for entryways. One side is designed to remove heavy debris and snow; the other side dislodges the dirt and moisture that comes with more moderate weather.

ITEM NUMBER	SIZE	THICKNESS	COLOR
227.716x3x6BK	3' x 6'	7/16"	BK



SPECIFICATIONS

Compound: SBR: Natural Rubber

Edges: Tapered

Warranty: 1 Year



229

Mud Chucker™



The name says it all — this rugged entrance mat was made to chuck mud. The recessed step-in area with rubber fingers on the sides and bottom remove mud, as well as dirt, grass, salt, and snow. The mat's durable ridges and sidewalls work in all seasons, keeping the debris out of your building year-round.

Mud Chucker™s can be used as portable shoe scrapers for off-site jobs or traveling workers, or can be permanently installed at facility entryways.

SPECIFICATIONS

Compound: Natural Rubber

Warranty: 1 Year



ITEM NUMBER	SIZE	THICKNESS	COLOR
229.2.2x12.4x15.25	2" x 12" x 15 1/4"	2.2"	BK

KEEP DEBRIS WHERE IT BELONGS

Concerned about debris tracking between manufacturing, warehouse, and office? Consider Clean Room Mat No. 095 on pages 58 and 64.